

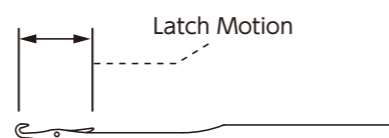
# Line-up

24G (mm)	
型号 Item	针舌长度 Latch Motion
Vo 14152-009C	6.0
Vo 14152-0010C	
Vo 14152-0011C	
Vo 14152-0012C	
Vo 14152-001C	7.0
Vo 14152-002C	
Vo 14152-003C	
Vo 14152-004C	
Vo 10452-01C	7.0
Vo 10452-02C	
Vo 14152-005C	8.0
Vo 14152-006C	
Vo 14152-007C	
Vo 14152-008C	
Vo 10452-03C	8.0
Vo 10452-04C	
Vo 12352-005C	8.0
Vo 12352-006C	
Vo 12352-007C	
Vo 12352-008C	
Vo 7852-007C	8.0
Vo 7852-008C	

32G (mm)	
型号 Item	针舌长度 Latch Motion
Vo 14136-001C	7.0
Vo 14136-002C	
Vo 14136-003C	
Vo 14136-004C	
Vo 10436-13C	7.0
Vo 10436-14C	

28G (mm)	
型号 Item	针舌长度 Latch Motion
Vo 14141-0013C	6.0
Vo 14141-0014C	
Vo 14141-0015C	
Vo 14141-0016C	
Vo 10441-0015C	6.0
Vo 10441-0016C	
Vo 14141-001C	7.0
Vo 14141-002C	
Vo 14141-003C	
Vo 14141-004C	
Vo 10441-0019C	7.0
Vo 10441-0020C	
Vo 14141-005C	8.0
Vo 14141-006C	
Vo 14141-007C	
Vo 14141-008C	
Vo 10441-0017C	8.0
Vo 10441-0018C	
Vo 12341-009C	8.0
Vo 12341-0010C	
Vo 12341-0011C	
Vo 12341-0012C	
Vo 7841-0025C	8.0
Vo 7841-0026C	

40G (mm)	
型号 Item	针舌长度 Latch Motion
Vo 10430-1C	7.0
Vo 10430-2C	



# PRODUCT INFORMATION KNITTING 03

# STREAMLINE

## for Single Jersey

PRODUCT INFORMATION  
KNITTING 03  
**STREAMLINE**  
for Single Jersey



## CIRCULAR KNITTING MACHINE NEEDLES

### ORGAN® NEEDLE CO., LTD.

#### 风琴针株式会社

〒386-1436 日本国長野県上田市前山1番地  
Tel: +81-268-38-3340 Fax: +81-268-38-3590

#### ORGAN NEEDLE CO., LTD.

1 Maeyama, Ueda-shi, Nagano-ken 386-1436, Japan  
Tel: +81-268-38-3363 Fax: +81-268-38-3590  
www.organ-needles.com Email: sales-dpt@organ-ndl.co.jp

#### 奥罗网针业(重庆)有限公司上海分公司

邮编200040 中国上海市北京西路1271号国旅大厦1001室  
Tel: +86-21-6279-3330 Fax: +86-21-6279-1109

#### ORGAN NEEDLE(CHONGQING) CO., LTD. SHANGHAI BRANCH

Room No.1001, Guolv Bldg., No.1271 Beijing West Road, Shanghai, China 200040  
Tel: +86-21-6279-3330 Fax: +86-21-6279-1109

#### 台湾风琴针贸易股份有限公司

台湾台北市承德路三段30号3F  
Tel: +886-2-2585-5190/5193 Fax: +886-2-2585-5182

#### TAIWAN ORGAN NEEDLE TRADING CO., LTD.

3F, No. 30, Sec. 3, Chengde Rd., Datong Dist., Taipei City, Taiwan  
Tel: +886-2-2585-5190/5193 Fax: +886-2-2585-5182

#### 风琴针业有限公司

香港香港仔黄竹坑道26号建德工业大厦15字楼  
Tel: +852-2552-8262 Fax: +852-2873-6037

#### ORGAN NEEDLE CO., LTD.

Kin Teck Industrial Bldg., 15th Floor, 26 Wong Chuk Hang Road, Aberdeen, P.R.O.C. Special Administration Region, Hong Kong  
Tel: +852-2552-8262 Fax: +852-2873-6037

#### 风琴针业 (新加坡) 私人有限公司

No.190, Middle Road, #13-05 Fortune Centre, Singapore 188979  
Tel: +65-6339-3581/3588 Fax: +65-6339-5550

#### ORGAN NEEDLE (SINGAPORE) CO. PTE LTD.

No.190, Middle Road, #13-05 Fortune Centre, Singapore 188979  
Tel: +65-6339-3581/3588 Fax: +65-6339-5550

#### ORGAN NEEDLE TRADING VIETNAM CO., LTD.

7F, 400 Nguyen Thi Thap Str., Tan Quy Ward, District 7, Ho Chi Minh City, Vietnam  
Tel: +84-28-3771-8025/8026 Fax: +84-28-3771-8027



©ORGAN 2023.11. All rights reserved.



## 流线型织针 用于单面 Streamline Needle for Single Jersey

Streamline是我司独自开发制造的流线型织针。独特的形状能更好地控制润滑油的流向，和之前的形状相比能更平滑地完成编织。将在更多的系列展开，并将搭载最新的制造工艺以追求更高的品质。

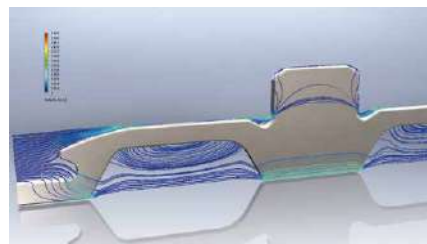
The Streamline needle developed by our original technology, helps control the flow of lubricating oil and enables a smooth knitting. As well as the expansion of product line-ups, we pursued quality improvement applying new production methods and technologies.

## 01 降低针运动时的阻力 Reduction of Resistance of Needle Motion

流线型的针身形状，能更好地控制针筒内润滑油的走向。减少针与针筒之间的摩擦，从而减轻织针和大圆机的负荷。对于降低圆机发热，减少用电量的效果也能有所期待。

The streamline body shape helps control the flow of lubrication. By reducing the sliding resistance of needles and cylinder, the burden on the machine and needles is lightened. This contributes to the reduction of heat generation and electricity consumption.

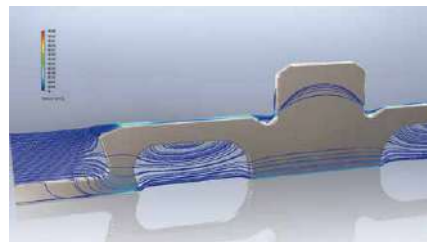
### 流线型 Streamline



润滑油沿着针的形状流动，因此能集中流向织针与针筒接触的针槽底部从而使编织能更平滑地进行

Oil flows alongside the body and spreads to the top and bottom of the needle where contact with the cylinder occurs enabling a smooth needle motion.

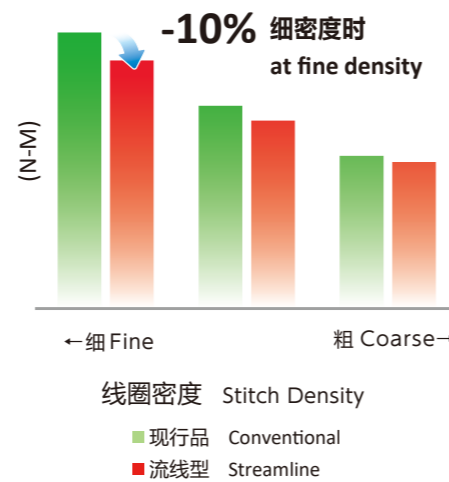
### 现行品 Conventional



润滑油和针同时流动的状态，润滑油不能很好地流动到和针筒接触的针的上部和下部

Oil flows parallel to the needle, which makes it difficult to reach the top or bottom of the needle when in contact with the cylinder.

### 针运动时的阻力 Resistance of Needle Motion



## 02 运转初期发生布面起毛的对策 Fluff Prevention at the Operation Startup

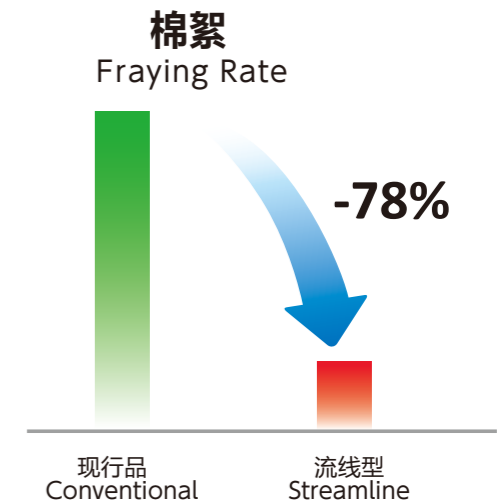
纱线滑走部分采用了最适当的形状，能抑制新针上机初期比较容易发生的起毛问题，对于生产效率的提高有很好的贡献。更能减少机器运转过程中棉絮的产生，降低针舌附近发生问题的机率。

Optimized shape of yarn running area of needle reduces fuzzy yarns at the operation startup after the needle replacement. Thereby improving productivity. This also reduces the lint occurrence and prevents problems around latch area.

### 流线型 Streamline



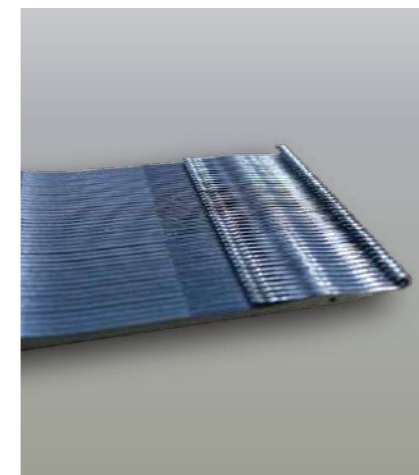
### 现行品 Conventional



## 03 提高整齐度 Improvement of Evenness

由于采用了新的制造工艺，提高了织针各尺寸的整齐度，从而实现更平滑地编织。

Evenness of needle improved by the new production method enables even loop formations.



### 影响编织的主要尺寸的整齐度提高

Improvement of Evenness of Main Dimensions which Affect to the Knitting

